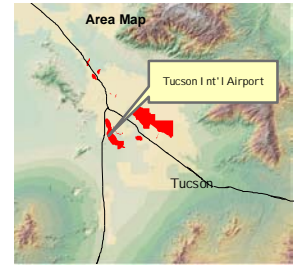
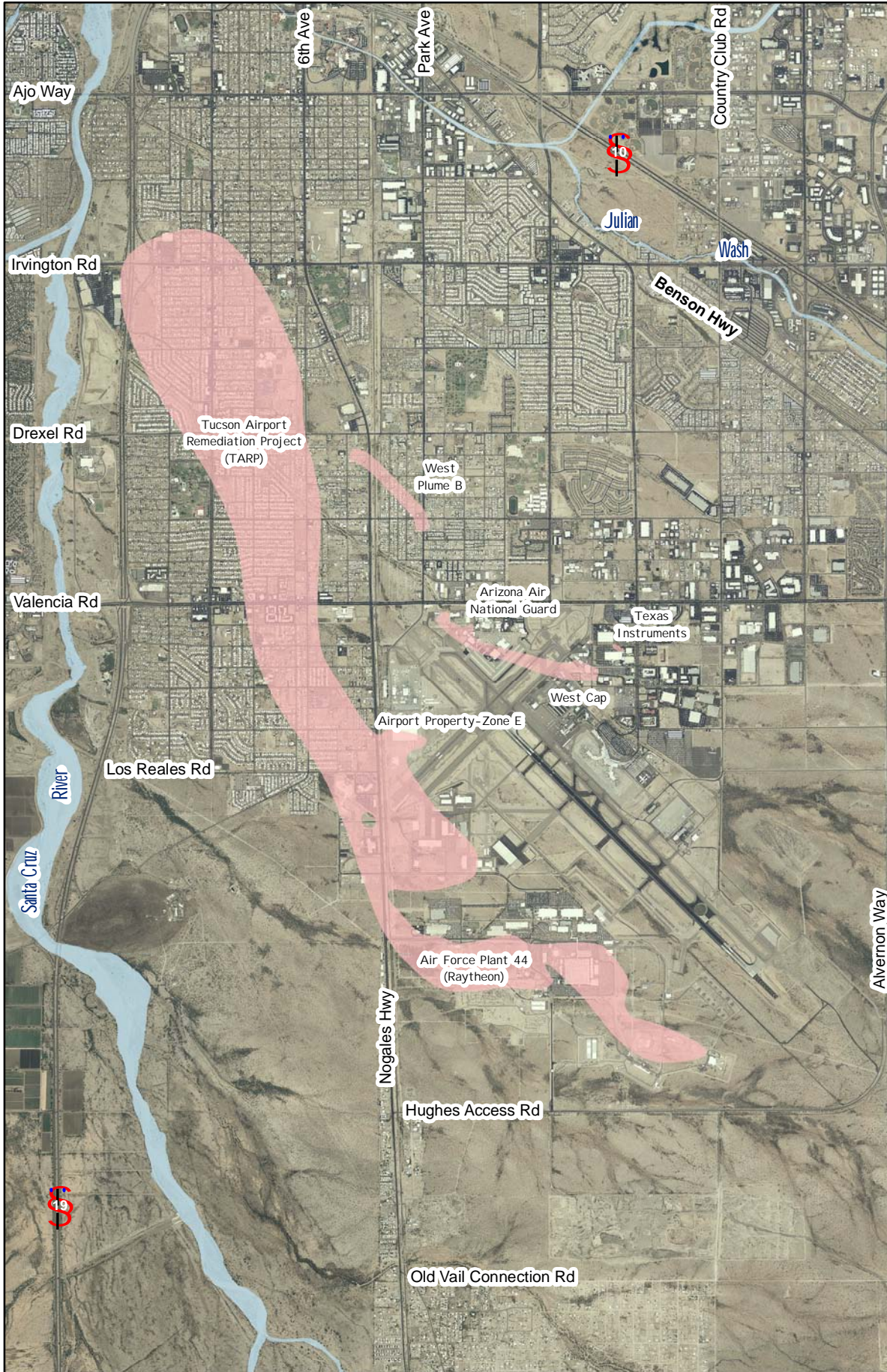




Tucson Int'l Airport Area (TIAA) EPA NPL Site



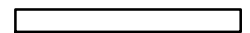
Legend

-  Estimated Plume Boundary
-  Wash Major

N



1



Miles

**Tucson, Arizona
January, 2009**

**WASTE PROGRAMS DIVISION
GIS and Data Management Unit**

Map produced by Arizona Department of Environmental Quality (ADEQ), GIS and Data Management Unit, TS Summers
D:\superfund\tucson\2009\tucson_intairp\projects2009\tucsonintl_Airport2009.mxd

Data Sources:
Arizona Department of Environmental Quality
Arizona Land Resources Information System
Arizona Department of Transportation.
Image: StateWide

"Site boundaries depicted on the site map represent ADEQ's interpretation of data available at the time the map was constructed. The map is intended to provide the public with basic information as to the estimated geographic extent of known contamination as of the date of map production. The actual extent of contamination may be different. Therefore, the geographic boundaries for this site may change in the future as new information becomes available."