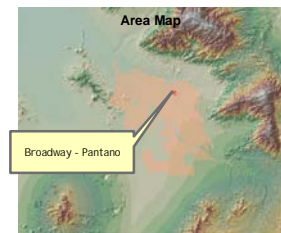
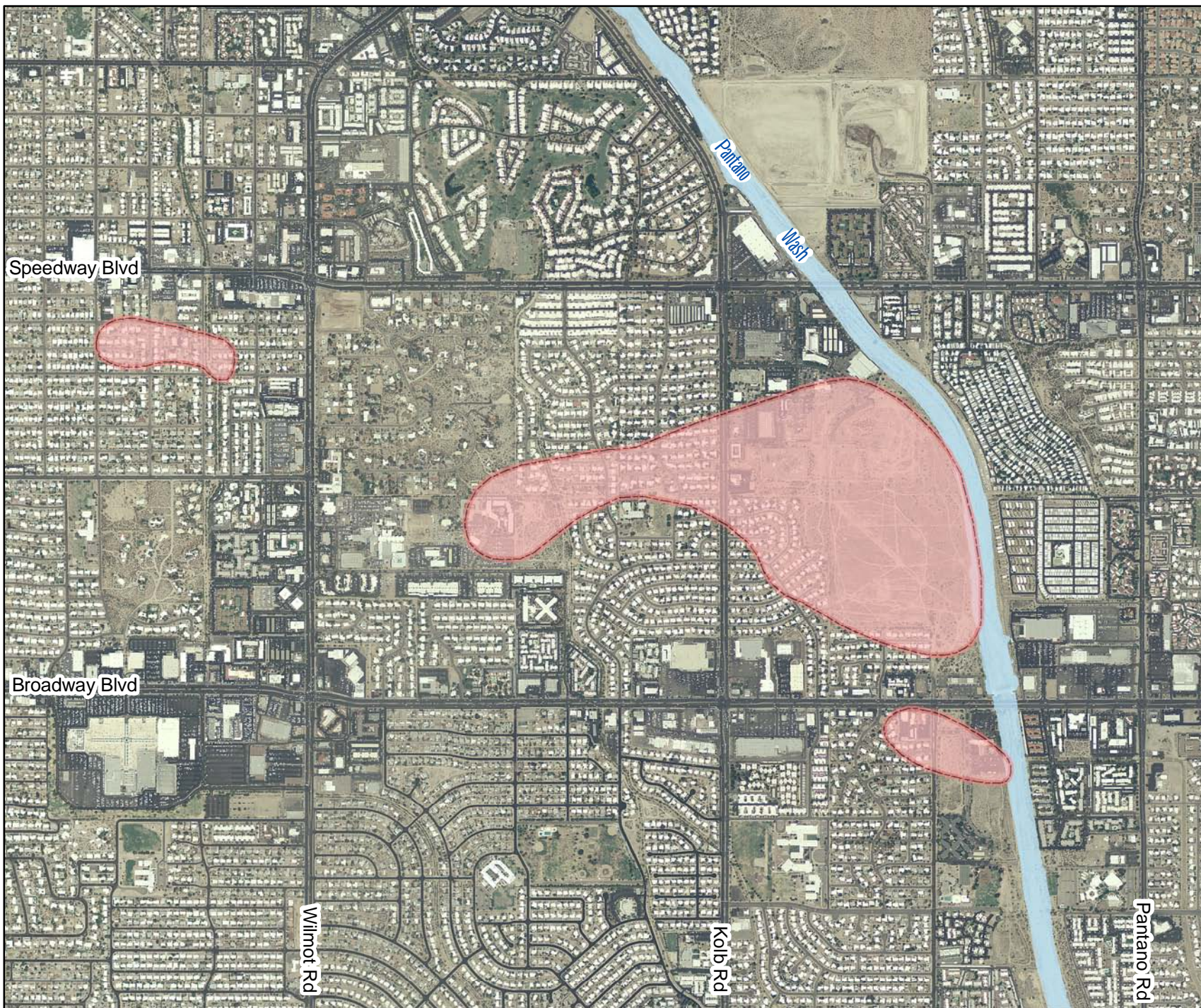


Broadway - Pantano WQARF Site



Legend

Estimated Plume Boundary



2,000



Feet

**Tucson, Arizona
January, 2009**

WASTE PROGRAMS DIVISION
GIS and Data Management Unit

Map produced by Arizona Department of
Environmental Quality (ADEQ), GIS and
Data Management Unit, TS Summers

D:\superfund\Tucson\2009\broadway_pantano\
projects\09\broadway Pan2009.mxd

Data Sources: Arizona Department of
Environmental Quality, Arizona Land Resources
Information System, Arizona Department of
Transportation. Image: Statewide, 2004
Projection: UTM, Nad 83, Meters

"Site boundaries depicted on the site map represent ADEQ's interpretation of data available at the time the map was constructed. The map is intended to provide the public with basic information as to the estimated geographic extent of known contamination as of the date of map production. The actual extent of contamination may be different. Therefore, the geographic boundaries for this site may change in the future as new information becomes available."